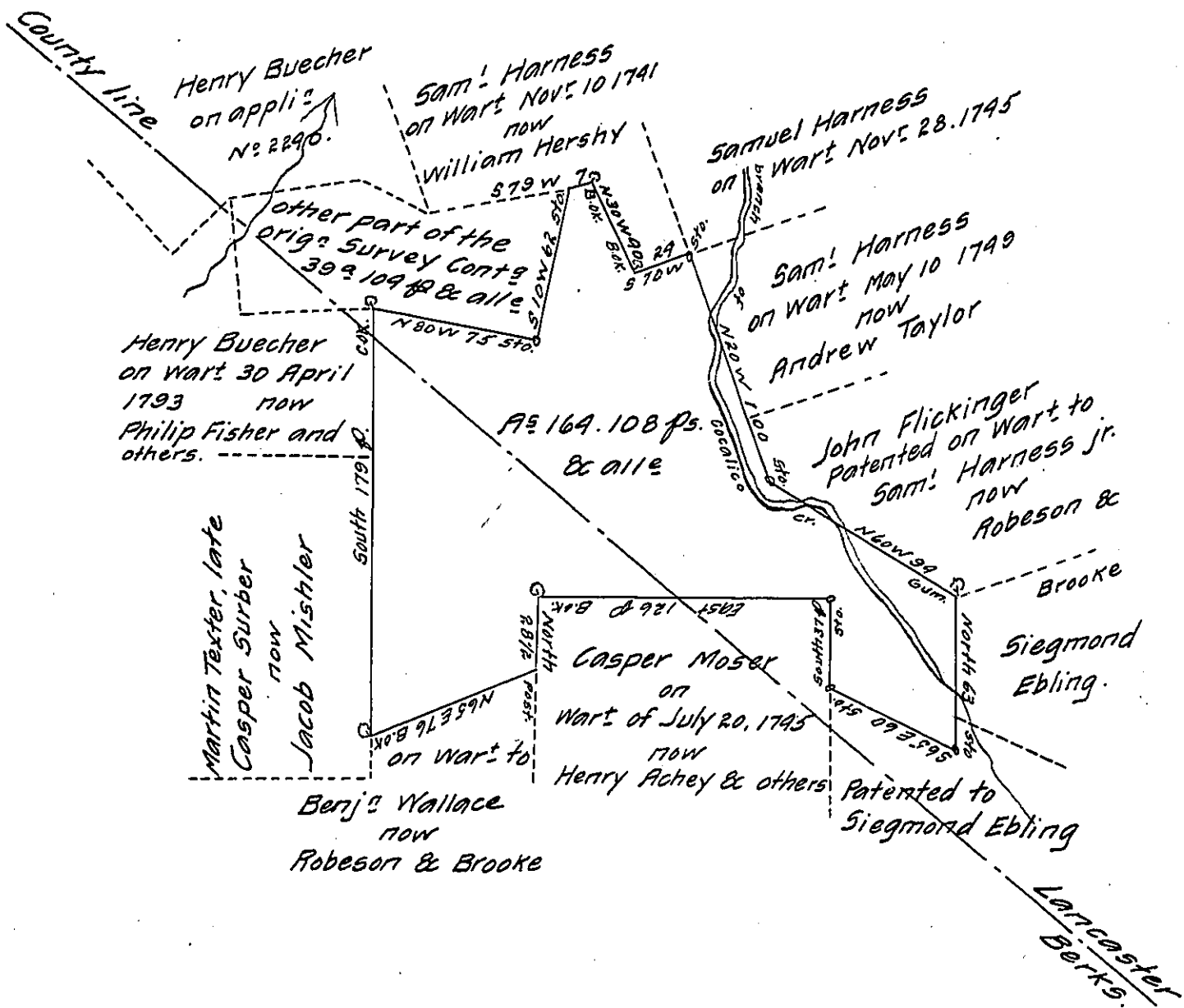


FORM No. 1.



Situate partly in Cocalico township, Lancaster County, and partly in (now) Lower Heidelberg township Berks County, being part of A: 209. 43 fts. & 6^o Ct. originally surveyed on Warrant granted to Hans & Peter Zimmermann (alias Timmerman) dated the 18th day of May A. Dom: 1750 - the above part containing one hundred and sixty four acres, one hundred and eight perches & allow: of 6^o Ct. now claimed by Henry P. Robeson, and Clement Brooke.

Approved of the above March the 2^d 1847.

Daniel Potteiger Dep: Sr. of Berks.

To John Laporte Esq: }
Surveyor General

IN TESTIMONY that the above is a copy of the original remaining on file in the Department of Internal Affairs of Pennsylvania, made conformably to an Act of Assembly approved the 16th day of February 1833, I have hereunto set my hand and caused the Seal of said Department to be affixed at Harrisburg, this fourteenth day of August 1907.

Henry Howard
Secretary of Internal Affairs.